



YOUR INTERMODAL JOURNEY STARTS HERE



BNSF INTERMODAL RESOURCE GUIDE 2024

BNSF INTERMODAL NETWORK



WHY BNSF INTERMODAL?



We moved nearly 5 million intermodal shipments last year, which is more than any other North American railroad.

We work with other supply chain leaders, including more than 100 of the top motor carriers in North America, to seamlessly deliver freight door to door.

We have also invested over \$38 billion since 2014, with those continued capacity investments allowing us to add new schedules and expand service options for our intermodal customers. As we continue to invest in our network and intermodal facilities, we'll continue to look to create additional capacity opportunities.

BNSF INTERMODAL BY THE NUMBERS

32,500 ROUTE MILES

28 U.S. STATES IN NETWORK

ALL MAJOR U.S. WEST COAST PORTS SERVED

27 INTERMODAL HUBS



Superior infrastructure allows for continuous flow of freight

- Southern Transcon route 99% double-tracked between Southern California and Chicago
- Triple and quadruple tracks strategically placed along our highest volume corridors

Efficient and sustainable

- Eliminates highway congestion (each intermodal train carries the equivalent of several hundreds of highway trucks)
- Reduces carbon emissions: a BNSF intermodal train can move one ton of freight nearly 500 miles on just one gallon of diesel fuel

The West Coast Difference

- The West Coast ports offer great advantages to shippers importing cargo from Asia to the inland United States, minimizing ocean transit time and supply chain cycle time

Focused on our customers' needs – today and tomorrow

- Continually expanding our service to reach key markets such as the Pacific Northwest, Dallas/Fort Worth, Chicago, Atlanta, Northwest Ohio and Mexico

Ready for your shipment when you're ready to ship

- No reservation required for both domestic and international shipments
- 24/7 operations



THE WEST COAST DIFFERENCE

The West Coast ports offer great advantages to shippers importing cargo from Asia to the inland United States, minimizing ocean transit time and supply chain cycle time. BNSF is the only railway to offer direct service between the West Coast and Atlanta and the Northwest Ohio Region. Together with our carrier partners, we can help you choose the best route for your imports via one of our many inland hubs.

OCEAN AND RAIL SCHEDULES

BNSF SCHEDULES

Please visit the [BNSF Customer Portal](#) for more information.

Domestic:

Expedited Container

Domestic:

Standard Container International

OCEAN SCHEDULES

Please visit our partner websites for more information.

Ocean Carrier Alliances and Southern California On-Dock (SCOD) Terminals

| Los Angeles | APMT | FMS | TIC TIF | WBA SIN | TIC SEA | TRAPAC |
|----------------|------|-----|---------|---------|---------|--------|
| 2M | ■ | | | ■ | | |
| OCEAN Alliance | ■ | ■ | ■ | | ■ | ■ |
| THE Alliance | ■ | | ■ | ■ | | ■ |

| Long Beach | LBCT | PIER J | ITS | PIER T |
|----------------|------|--------|-----|--------|
| 2M | | | | ■ |
| OCEAN Alliance | ■ | ■ | | |
| THE Alliance | | | ■ | |

2M
Maersk
MSC
Hamburg Süd

OCEAN Alliance
CMA CGM
COSCO
Evergreen
OOCL
APL

THE Alliance
Hapag Lloyd
Yang Ming
ONE
HMM

DOMESTIC / OFF-DOCK INTERNATIONAL

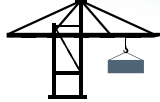
1 WAREHOUSE/VESSEL ORIENTATION



2 IN-GATE



3 LOADED



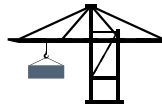
4 TRAIN DEPARTURE



5 TRAIN ARRIVAL



6 UNLOADED



7 OUT-GATE



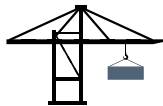
THE
INTERMODAL
CYCLE

ON-DOCK INTERNATIONAL

1 VESSEL ARRIVAL



2 LOADED



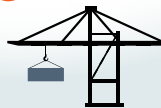
3 TRAIN DEPARTURE



4 TRAIN ARRIVAL



5 UNLOADED



6 OUT-GATE





WHY CHOOSE DOMESTIC INTERMODAL?

Strategically located to meet your needs

- Conveniently located in key markets, BNSF facilities are a short drive from your company's transload operation
- Cost-saving co-location opportunities are available near most BNSF hubs

Unparalleled service options that compete with over-the-road options

- **Expedited Domestic:** Ideal for time-sensitive freight such as parcel, promotional, temperature-controlled and direct-to-store shipments. The fastest intermodal service in the industry with an average network speed over 800 miles/day
- **Standard Domestic:** Maximum value for shippers who prioritize cost and capacity. Reach key markets with an average network speed of about 550 miles/day

Most efficient hubs in key markets

- BNSF moved approximately 3 million domestic shipments in 2023, more than any other railroad
- We continue to expand existing hubs and introduce new facilities to meet growing demand in major markets

The best and biggest carrier partners in the industry

- The names you know and trust
- Asset owners with the capacity to serve you today and tomorrow
- Don't have a box? BNSF has wholesale capacity options

New technologies

- Our capabilities expand every year with our investment in state-of-the-art technologies such as remotely operated cranes
- We are committed to improving the customer experience and increasing efficiency simultaneously through technologies like our RailPASS driver app and automated yard checks

ORANGE IS THE NEW GREEN



Sustainable Freight Transportation for your Supply Chain

- Rail is the most environmentally efficient mode of surface transportation, and our customers recognize it as an effective way to **REDUCE CARBON EMISSIONS**.
- At BNSF, we are committed to **IMPROVING THE EFFICIENCY OF OUR NETWORK** in a way that benefits both our customers and the environment.
- In 2022, shipping with BNSF enabled our customers to reduce their total carbon emissions by 23.9 million metric tons. That's the equivalent of **TAKING 5.2M VEHICLES OFF THE ROAD***
- On average, BNSF trains move one ton of freight **NEARLY 500 MILES ON JUST ONE GALLON OF DIESEL FUEL.***
- On average, trains are three to four times more fuel efficient than their highway counterparts and **LOWER GREENHOUSE GAS EMISSIONS** by more than 75%.**
- If 25% of truck traffic moving at least 750 miles went by rail instead, annual **GREENHOUSE GAS EMISSIONS WOULD FALL BY 13.6 MILLION TONS.****

*BNSF Data

**Association of American Railroads Data





Los Angeles – Hobart/Commerce

5600 East 26th Street, Commerce, CA 90040

4000 E. Sheila Street, Bldg 39, Los Angeles, CA 90023

WHY LOS ANGELES?

Located near downtown Los Angeles, BNSF's Hobart and Commerce facilities together handle the WORLD'S LARGEST AMOUNT OF DOMESTIC INTERMODAL FREIGHT. Hobart includes a large "ground-stacking" operation that allows volume inside the facility to expand vertically.

- Automated gate technology: Automated unit identification, chassis damage detection, evolving machine vision applications.
- All intermodal modes are managed via Los Angeles (i.e., International, Domestic, LTL, TCI, Expedited and Standard).
- Overhead cranes.

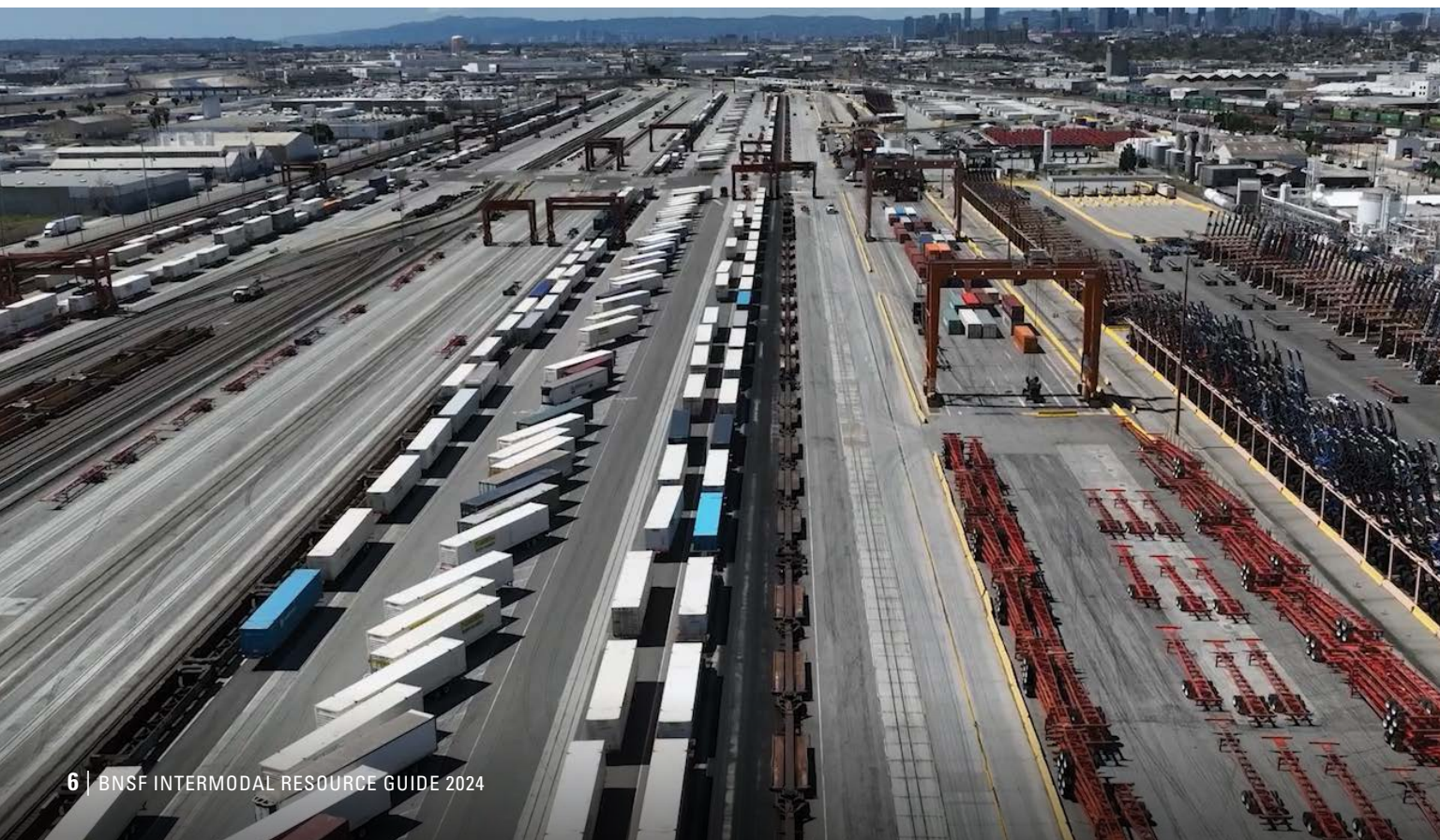
243 acres

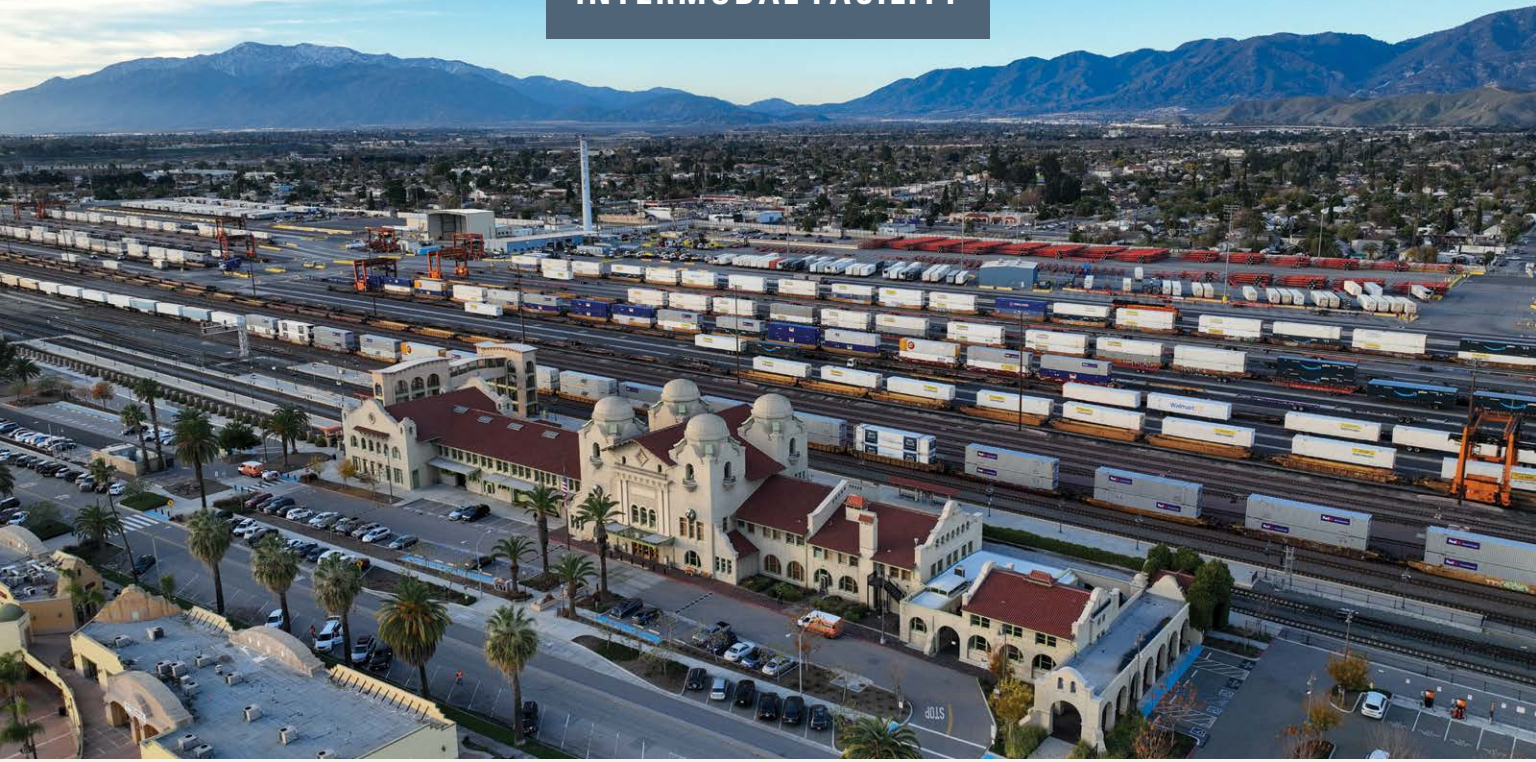
59,000 feet of production track

2,700 on-site parking

30 cranes

1,475 on-site stacking





San Bernardino

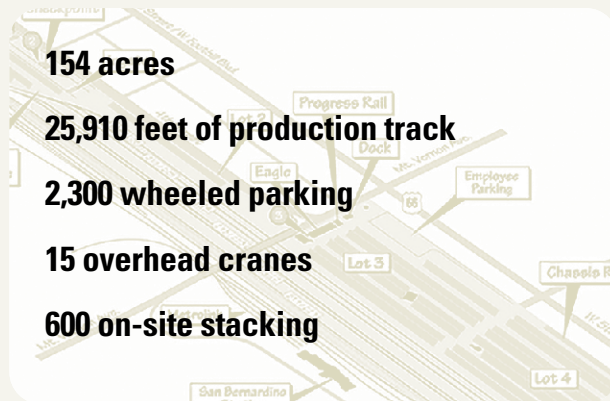
1535 W. 4th Street, San Bernardino, CA 92411



WHY SAN BERNARDINO?

Located in the heart of the INLAND EMPIRE INDUSTRIAL MARKET, BNSF's Intermodal Facility at San Bernardino connects approximately 600 million square feet of industrial space with the rest of the country.

- Automated gate technology: Automated unit identification, chassis damage detection, evolving machine vision applications.
- Domestic container and trailer facility.
- Overhead cranes.
- Co-location opportunities are available.





**PACIFIC
SOUTHWEST**

Port of Los Angeles

Harbors: One

Berths: 50, equaling 49,117 ft.

Cranes: 86

Depth: 32 ft. – 53 ft.

Container Line Services Available

- CMA CGM/APL
- COSCO
- MSC
- MAERSK
- OOCL
- YANG MING
- HYUNDAI



Port of Long Beach

Harbors: One

Berths: 80

Cranes: 72

Depth: Main Channel: 76 ft.
Terminals: 50+ ft.

Container Line Services Available

- MSC
- COSCO
- MAERSK
- HMM
- CMA CGM
- OOCL
- YANG MING
- MATSON
- EVERGREEN
- HAPAG-LLOYD
- ONE
- PASHA
- SM LINE
- WAN HAI



**PACIFIC
NORTHWEST**

The Northwest Seaport Alliance (NWSA):

Ports of Tacoma and Seattle

Harbors: Two

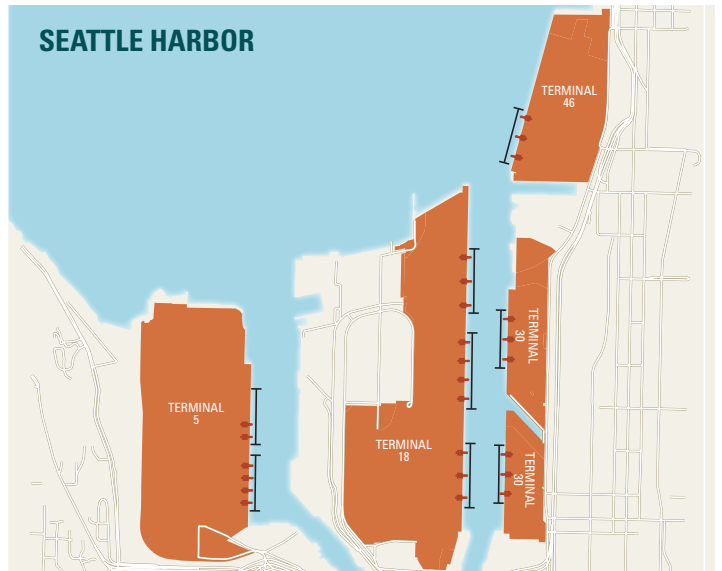
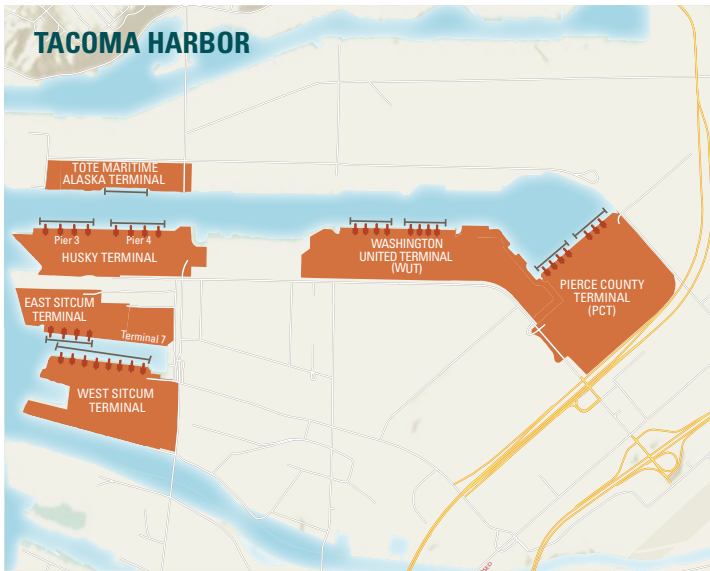
Berths: 31, equaling 28,172 ft.

Cranes: 50

Depth: 30 ft. – 51 ft.

Container Line Services Available

- CMA CGM/APL
- COSCO
- EVERGREEN
- HYUNDAI
- MAERSK
- MATSON
- MSC
- OOCL
- YANG MING
- WESTWOOD





PLATFORMS AND PROCESSES TO MOVE YOUR FREIGHT FASTER

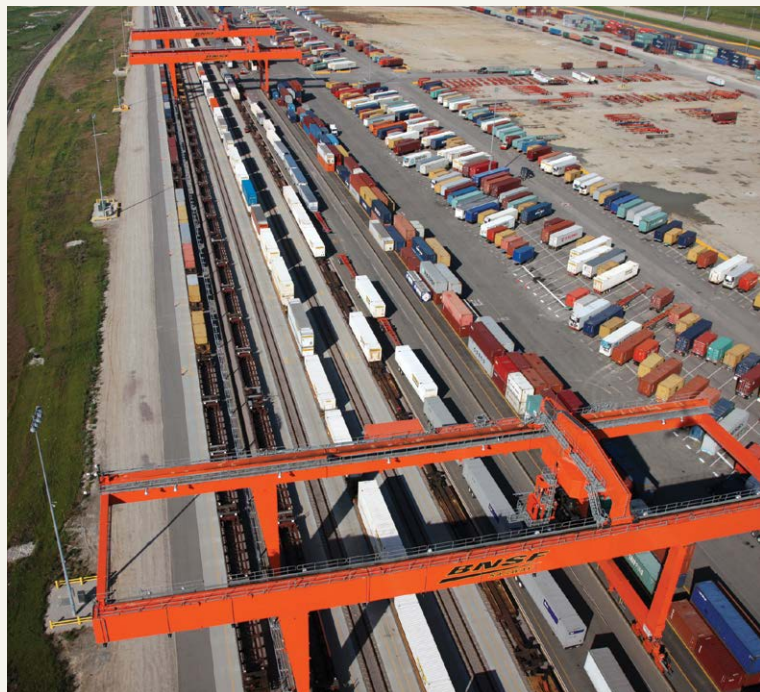
EQUIPMENT

Lift Equipment

- Lift equipment (cranes) do the most work at BNSF'S intermodal facilities – and we have the right tools for the job.
- Each facility has the right equipment to meet your specific needs, from side loaders to the latest in gantry crane technology.

Rail Equipment

- BNSF has committed the largest investment of any railroad in intermodal rail equipment.
- Combined with both our owned assets and leased equipment, BNSF controls nearly 40% of the national fleet.



PRODUCTION & TRACK SUPPORT

- Intermodal trains vary in size from 5,000 to 12,000 feet, and BNSF designs facilities and tracks to align for growing train lengths.
- Each 8,000 feet of production track can produce 200,000 lifts per year.

HUB PARKING

- We use both stacked and wheeled operations in order to keep our intermodal facilities moving 24/7/365
- It takes 2 ½ acres of land to accommodate 100 containers, so we're constantly evaluating our facilities for maximum production.

CHECKPOINTS

- BNSF has implemented many technologies to help drivers operate as efficiently as possible in our intermodal facilities.
- Automatic gate systems (AGS) allow for easy entry and exit using kiosks that help expedite driver identification and generate directions on where to go.
- Digital camera portals identify each container number and take multiple photos/videos of the equipment to identify any damage or road wear issues.

MSC

Ocean Carrier by Market

From Pacific Southwest (PSW)

Inland Market

| Chicago | DFW | Kansas City | Houston | Memphis | Atlanta | St. Louis |
|---------|-----|-------------|---------|---------|---------|-----------|
| ■ | ■ | ■ | | ■ | ■ | |

From Pacific Northwest (PNW)

Inland Market

| Chicago | St. Paul | Denver | Omaha | Memphis |
|---------|----------|--------|-------|---------|
| ■ | ■ | ■ | | |



CMA CGM

Ocean Carrier by Market

From Pacific Southwest (PSW)

Inland Market

| Chicago | DFW | Kansas City | Houston | Memphis | Atlanta | St. Louis |
|---------|-----|-------------|---------|---------|---------|-----------|
| ■ | ■ | ■ | ■ | ■ | ■ | ■ |

From Pacific Northwest (PNW)

Inland Market

| Chicago | St. Paul | Denver | Omaha | Memphis |
|---------|----------|--------|-------|---------|
| ■ | ■ | ■ | ■ | ■ |



BEST-IN-CLASS HUB FACILITIES



LARGEST HUB NETWORK of its kind.

DIRECT ACCESS to thousands of major distribution centers and warehouses across the U.S.

AUTOMATED DRIVER CHECK-IN PROCESS using advanced technology to facilitate in-gating and out-gating.

RAILPASS PLATFORM can integrate shipment details into trucking onboard computers for a faster, easier on-terminal experience.

BNSF LOGISTICS PARKS

- Warehousing and distribution center operations
- Access to trucking supply and intermodal services.
- Strategically and centrally located in major industrial business centers across the U.S.
- Streamlined supply chain solutions that move your shipments faster and more efficiently.

CO-LOCATION BENEFITS

Co-location is locating your distribution center or warehouse within a BNSF Logistics Park or adjacent to an intermodal hub. It provides streamlined supply chain solutions that connect manufacturers and retailers to their markets.

- Reduce drayage cost
- Maximize truck turns
- Minimize number of trucks and drivers needed
- Intermodal service business park focus, direct rail available
- Consumer, packaged, 3PL and export-focused tenants
- Strong developer partnerships
- Private capital and public investment
- Decrease emissions and costs by cutting fuel consumption
- Modal connectivity
- Heavyweight capabilities



MAERSK

Ocean Carrier by Market

From Pacific Southwest (PSW)

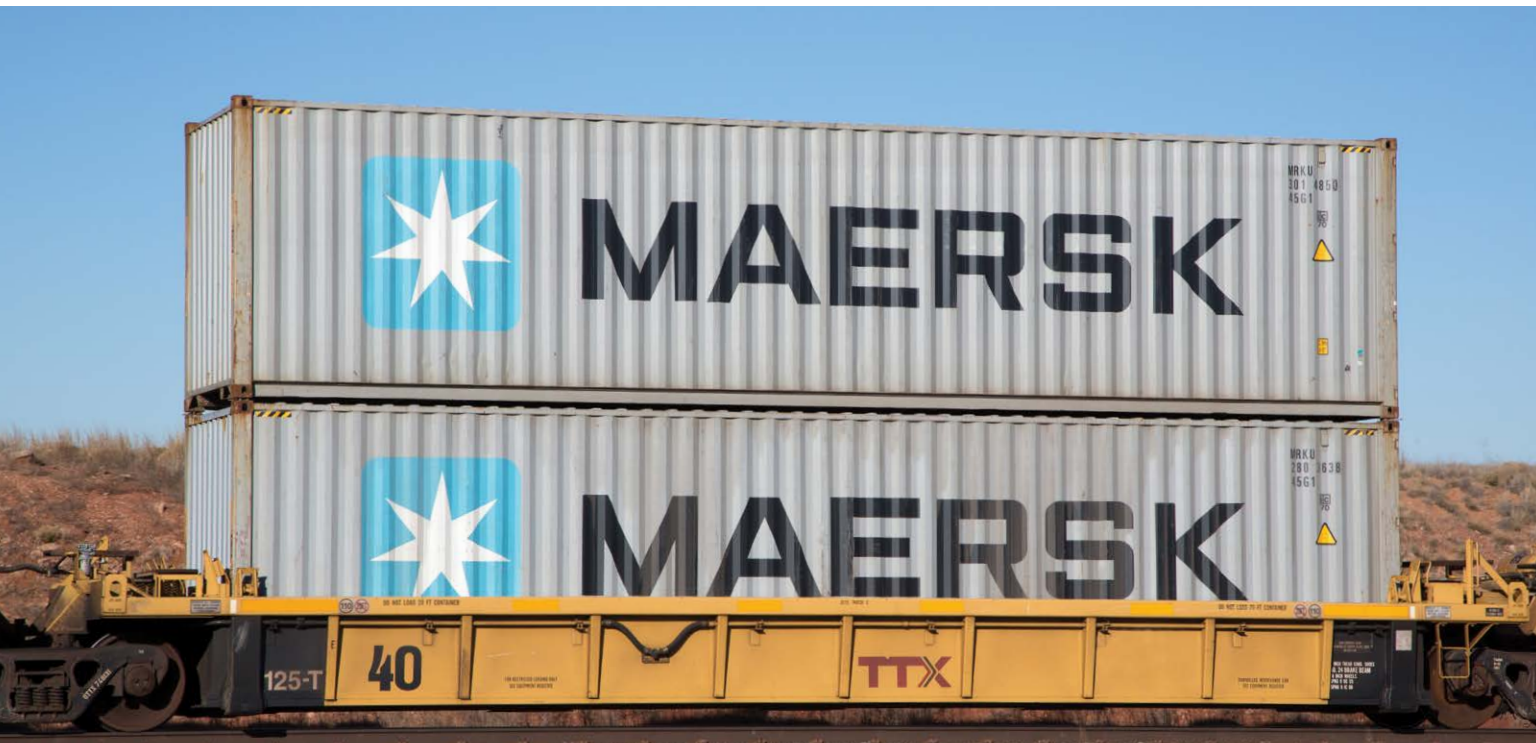
Inland Market

| Chicago | DFW | Kansas City | Houston | Memphis | Atlanta | St. Louis |
|---------|-----|-------------|---------|---------|---------|-----------|
| ■ | ■ | ■ | ■ | ■ | ■ | ■ |

From Pacific Northwest (PNW)

Inland Market

| Chicago | St. Paul | Denver | Omaha | Memphis |
|---------|----------|--------|-------|---------|
| ■ | | | | |





Logistics Park Chicago



26665 Elwood International Port Road, Elwood, IL 60421

WHY CHICAGO?

OVER 8,800 ACRES OF DEVELOPABLE LAND AND 32 MILLION SQUARE FEET are located in area industrial parks situated near Logistics Park Chicago (LPC).

- Nation's largest inland port.
- Automated gate technology: Automated unit identification, chassis damage detection, evolving machine vision applications.
- LPC combines direct rail/carload service with domestic/international intermodal service.
- Direct Asian import/export from the West Coast.
- Co-location opportunities are available.
- Foreign-Trade Zone.

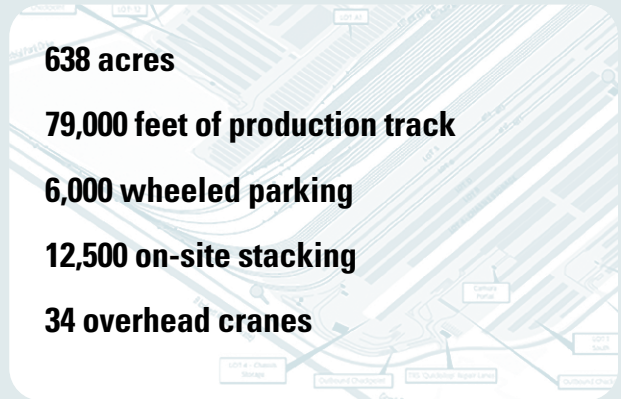
638 acres

79,000 feet of production track

6,000 wheeled parking

12,500 on-site stacking

34 overhead cranes





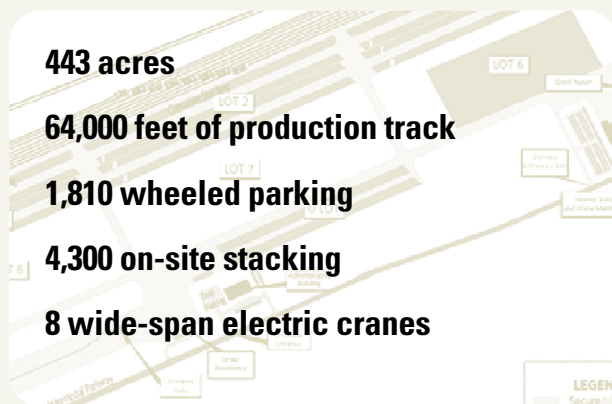
Logistics Park Kansas City

32880 W. 191st Street, Edgerton, KS 66030

WHY KANSAS CITY?

Logistics Park Kansas City (LPKC) is a 1,700-ACRE MASTER-PLANNED DISTRIBUTION AND WAREHOUSE DEVELOPMENT WITH 17 MILLION SQUARE FEET.

- LPKC combines direct-rail/carload service with domestic/international intermodal service.
- Automated gate technology: Automated unit identification, chassis damage detection, evolving machine vision applications.
- Co-location opportunities are available.
- Foreign-Trade zone.
- Container yard services.



COSCO

Ocean Carrier by Market

From Pacific Southwest (PSW)

Inland Market

| Chicago | DFW | Kansas City | Houston | Memphis | Atlanta | St. Louis |
|---------|-----|-------------|---------|---------|---------|-----------|
| ■ | ■ | ■ | | | | ■ |

From Pacific Northwest (PNW)

Inland Market

| Chicago | St. Paul | Denver | Omaha | Memphis |
|---------|----------|--------|-------|---------|
| ■ | ■ | | ■ | |



OOCL

Ocean Carrier by Market

From Pacific Southwest (PSW)

Inland Market

| Chicago | DFW | Kansas City | Houston | Memphis | Atlanta | St. Louis |
|---------|-----|-------------|---------|---------|---------|-----------|
| ■ | ■ | ■ | ■ | ■ | ■ | ■ |

From Pacific Northwest (PNW)

Inland Market

| Chicago | St. Paul | Denver | Omaha | Memphis |
|---------|----------|--------|-------|---------|
| ■ | ■ | ■ | ■ | |





Memphis

4814 Lamar Avenue, Memphis, TN 38118

WHY MEMPHIS?

Situated adjacent to our sprawling direct rail hub, the Memphis Intermodal Facility provides LEADING-EDGE TRANSPORTATION SOLUTIONS in one of the country's PREMIER INDUSTRIAL BUSINESS CENTERS with OVER 2,000 ACRES earmarked for development.

- Automated gate technology: Automated unit identification, chassis damage detection, evolving machine vision applications.
- Wide-span cranes allow for efficient ground-stack operations.
- Co-location opportunities are available.

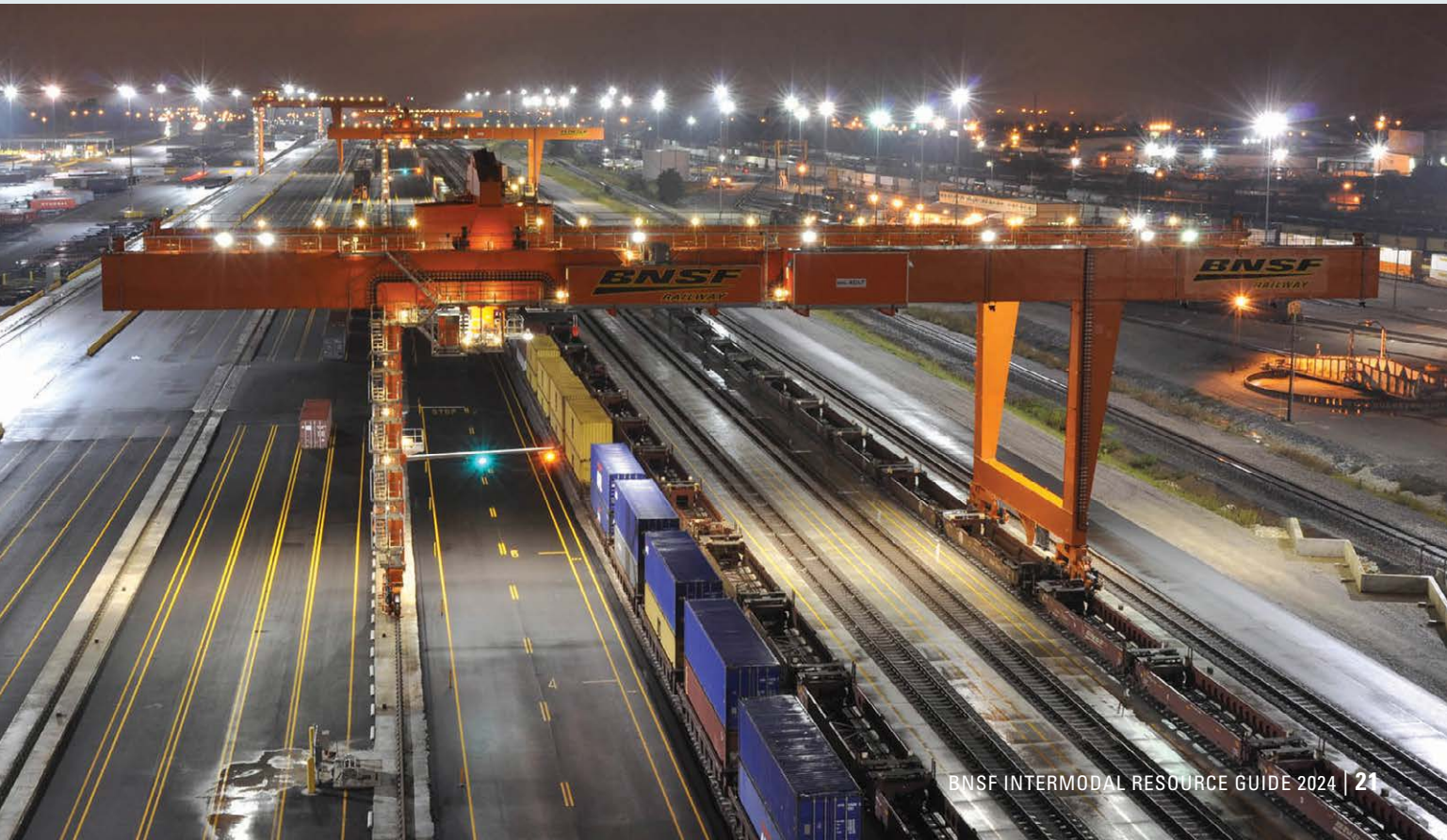
180 acres

44,700 feet of production track

2,900 wheeled parking

5,000 on-site stacking

8 Wide-Span Electric Cranes





Logistics Park Alliance

1111 Intermodal Parkway, Haslet, TX 76052



WHY ALLIANCE?

Positioned within the 26,000-ACRE ALLIANCE TEXAS DEVELOPMENT, Logistics Park Alliance is ideally located in the Dallas Fort Worth Metroplex to serve the South Central part of the U.S.

- Automated yard check: Real-time accounting of parking locations of trailers, containers and chassis using image analytics and machine learning.
- Automated gate technology: Automated unit identification, chassis damage detection, evolving machine vision applications.
- All intermodal modes are managed via Alliance (i.e., International, Domestic, LTL, TCI, Expedited and Standard)
- Co-location opportunities are available.
- Foreign-Trade Zone

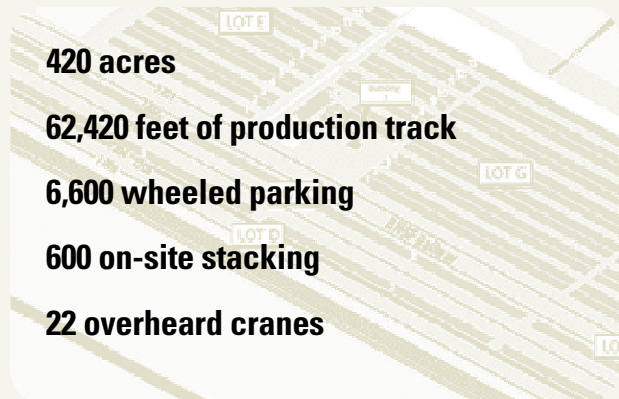
420 acres

62,420 feet of production track

6,600 wheeled parking

600 on-site stacking

22 overhead cranes



YANG MING

Ocean Carrier by Market

From Pacific Southwest (PSW)

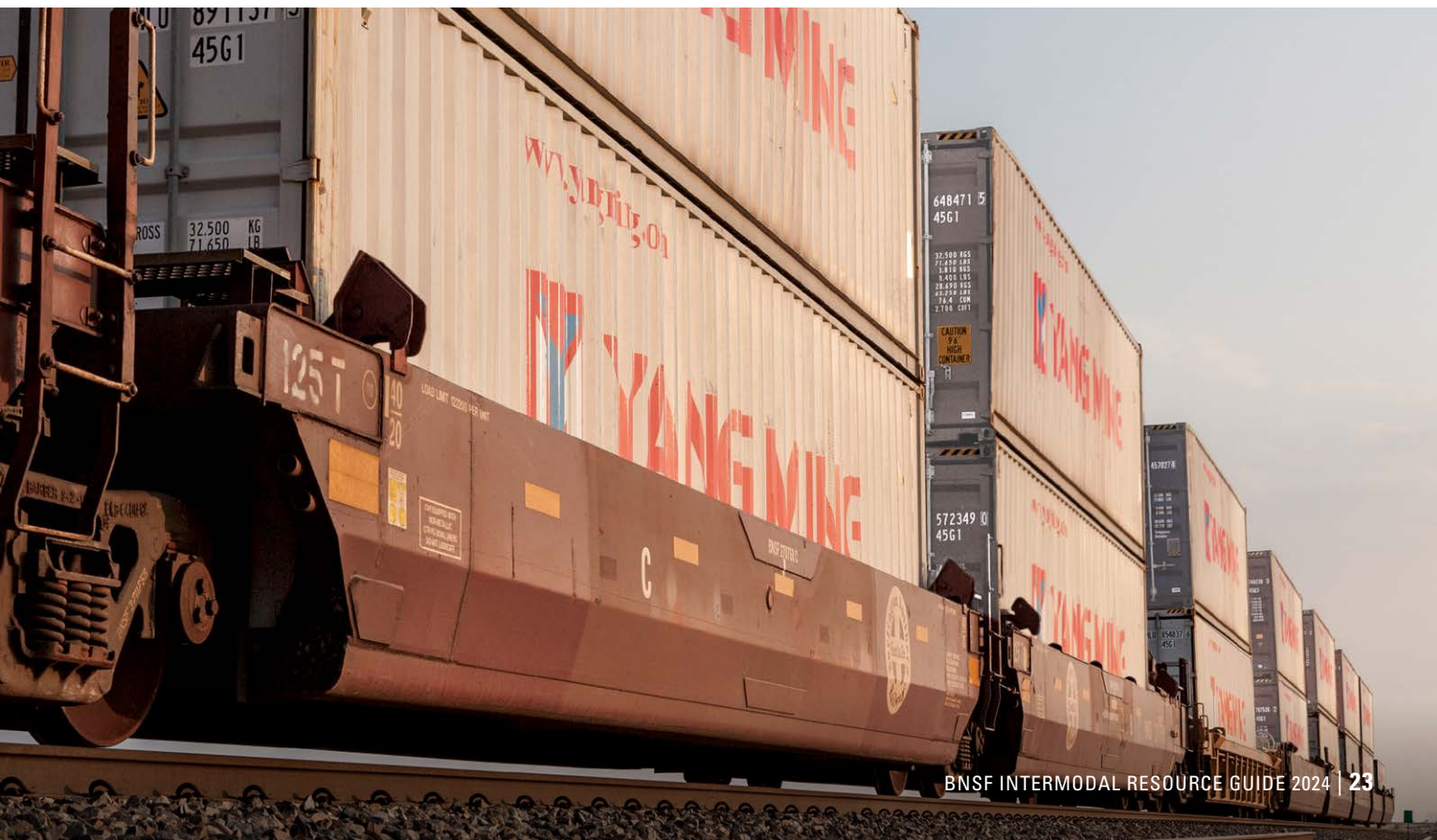
Inland Market

| Chicago | DFW | Kansas City | Houston | Memphis | Atlanta | St. Louis |
|---------|-----|-------------|---------|---------|---------|-----------|
| ■ | | ■ | | | | ■ |

From Pacific Northwest (PNW)

Inland Market

| Chicago | St. Paul | Denver | Omaha | Memphis |
|---------|----------|--------|-------|---------|
| ■ | ■ | ■ | | |



COMING SOON: BARSTOW

BARSTOW INTERNATIONAL GATEWAY (BIG) OVERVIEW

- State-of-the-art master-planned rail facility 130 miles from the Ports of Los Angeles and Long Beach
- Largest facility in North America with +4,500 acres
- Fully integrated rail and transload for a streamlined supply chain
- Significant land for on-site warehouse development
- Access to the fastest intermodal route and largest hub network
- More sustainable supply chain solution
- Economic Development expertise to help facilitate and expedite the development of your facility

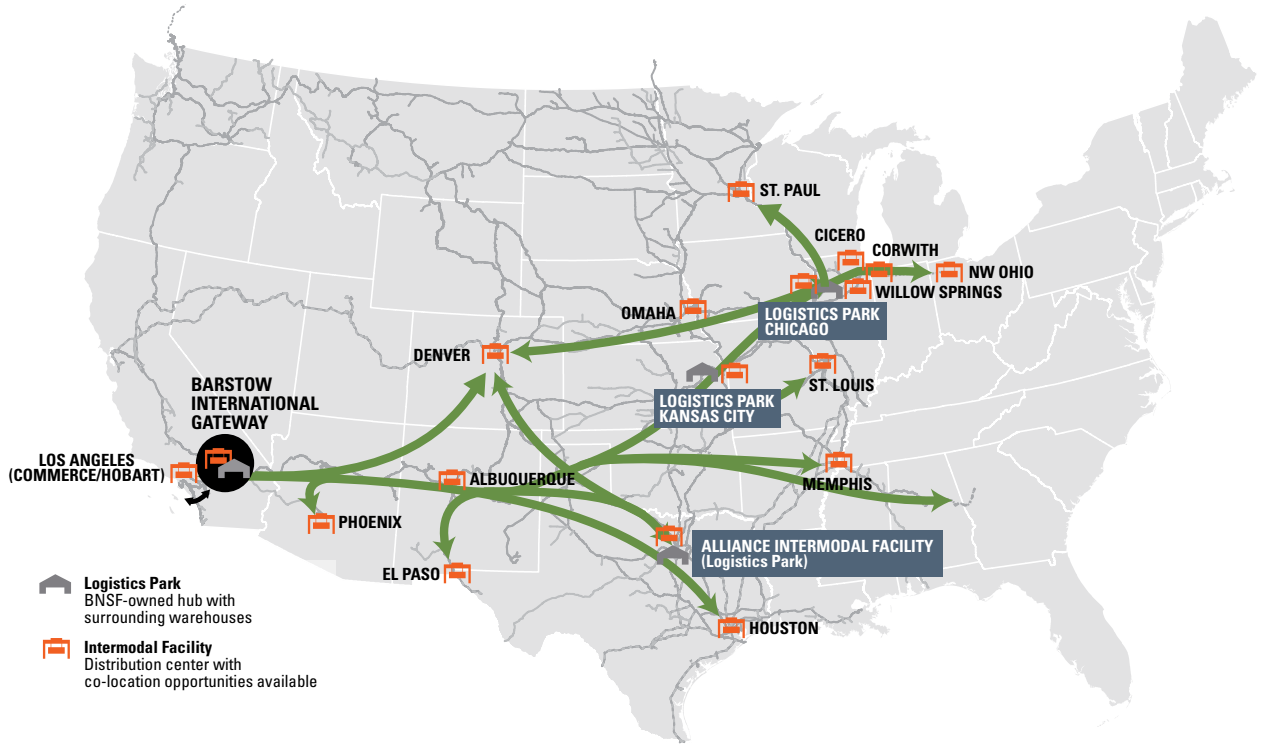


BIG ADVANTAGES FOR CUSTOMERS

- Increases supply chain efficiencies with integrated rail and transload complex
- Improves fluidity throughout our rail network, moving containers off the ports quicker, and facilitating improved efficiency at our existing intermodal hubs, including those in the Midwest and Texas
- Reduces transit times and provides shorter drays with the integrated intermodal facility and transload services
- Reduces your carbon footprint by providing a sustainable, integrated transportation solution



BIG ROOM FOR GROWTH



SEAMLESS AND EFFICIENT MOVEMENT OF INTERNATIONAL FREIGHT

